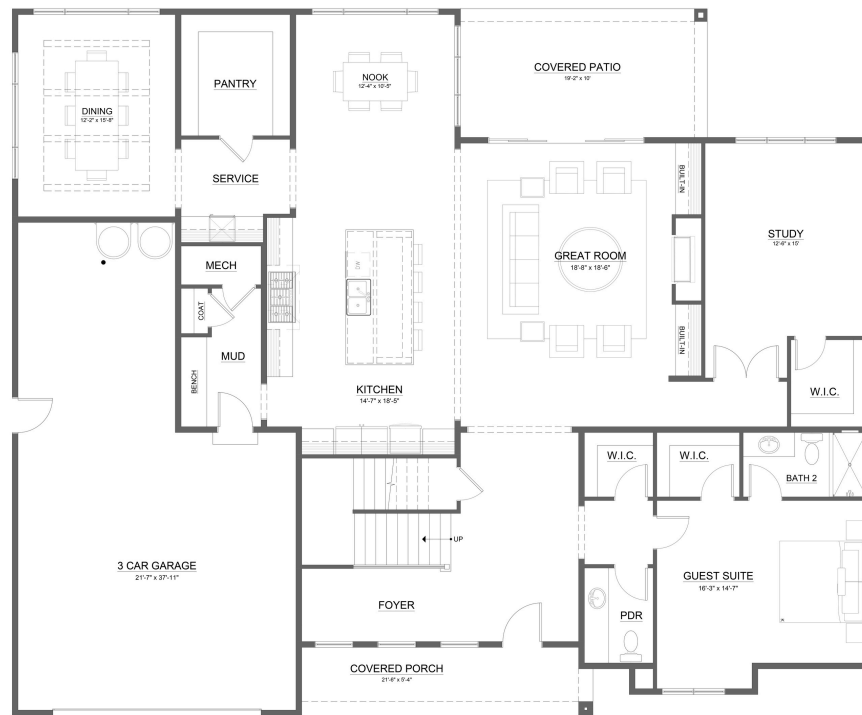


THE PIEDMONT



836 130TH AVE NE
BELLEVUE, WA 98005



4,911 SF | 5 beds | 4 baths | 3 car garage | 2 story

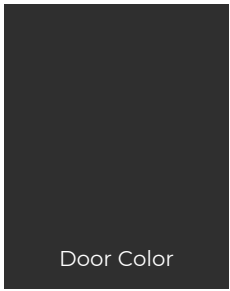
Marketing plans and specification/features information are for general information purposes only and are subject to change without notice.
Buyer should verify plans and specifications to their own satisfaction

MAIN FLOOR

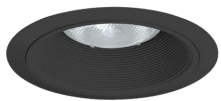


SECOND FLOOR

All exterior and interior specifications and materials are subject to change.



E X T E R I O R





Perimeter Counter



Backsplash



Cabinets



Hardwood Floor

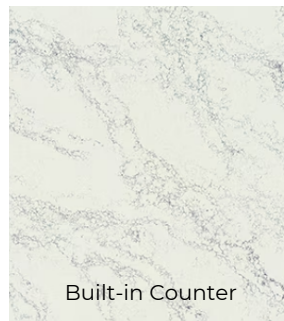
KITCHEN





Fireplace Hearth
and Surround

G R E A T R O O M



Built-in Counter



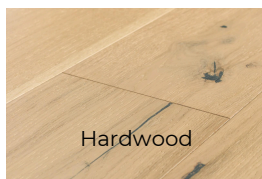
Fireplace Built-ins



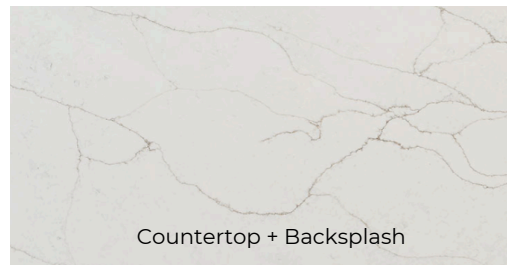
Floor



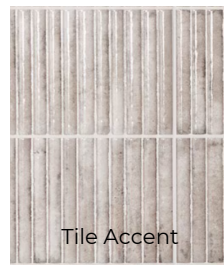
P O W D E R
R O O M



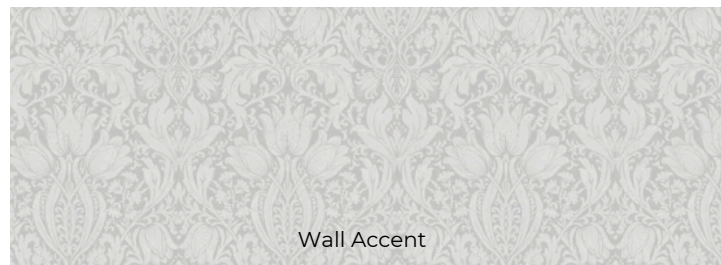
Hardwood



Countertop + Backsplash



Tile Accent



Wall Accent



Counter, Backsplash, Top of Curb, Top
of Bench + Niche Liner

Shower Pan

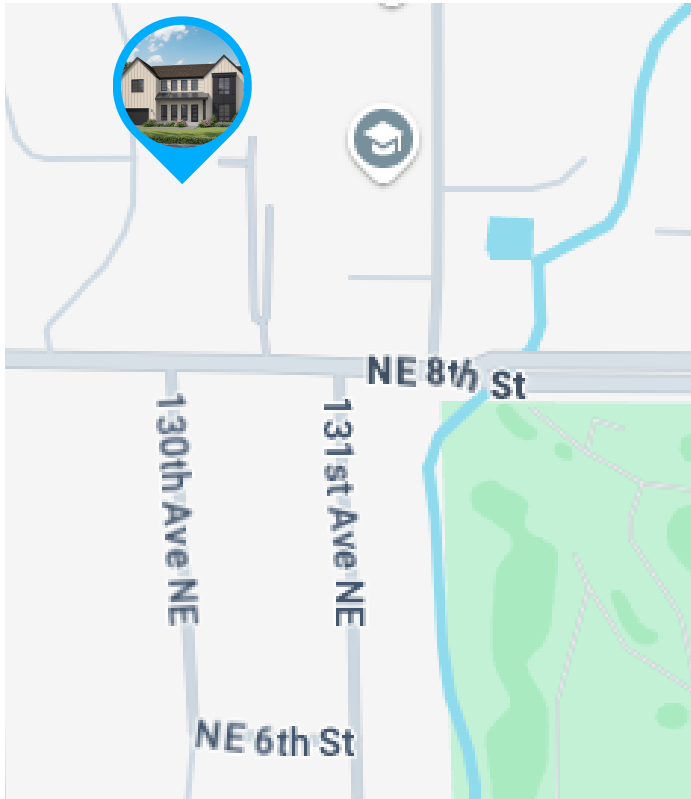
Shower Side Walls +
Back of Niche

Floor + Shower
Back Wall

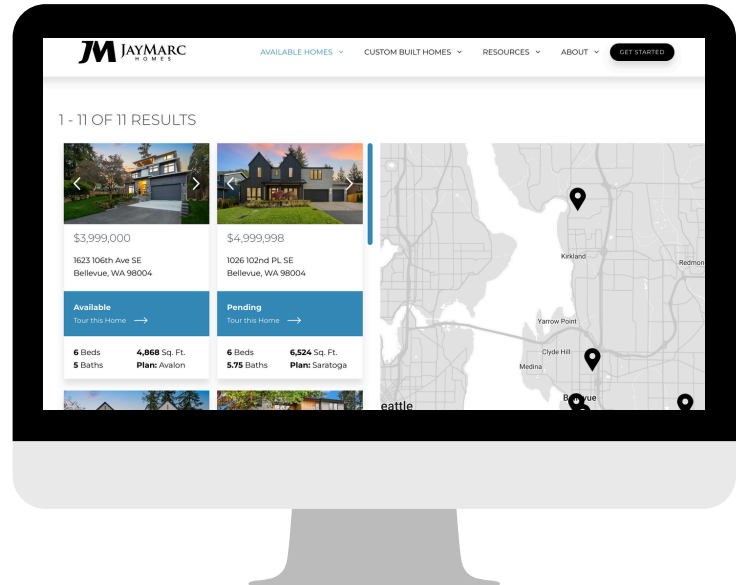
GUEST SUITE BATHROOM

Cabinets





Scan the QR Code
to learn more and
schedule a tour.



STAY UP TO DATE
www.jaymarchomes.com/homes

Please reach out to our New Home Specialists below for more information on completion dates, pricing, selections, and availability for in-person or virtual tours.



Daniel Sessoms

New Home Specialist

206.779.9662

daniel.sessoms@compass.com



Kelly Langston

New Home Specialist

310.751.0301

kelly.langston@compass.com



CONNECT WITH US!



@jaymarchomes

Want to schedule a call or tour?